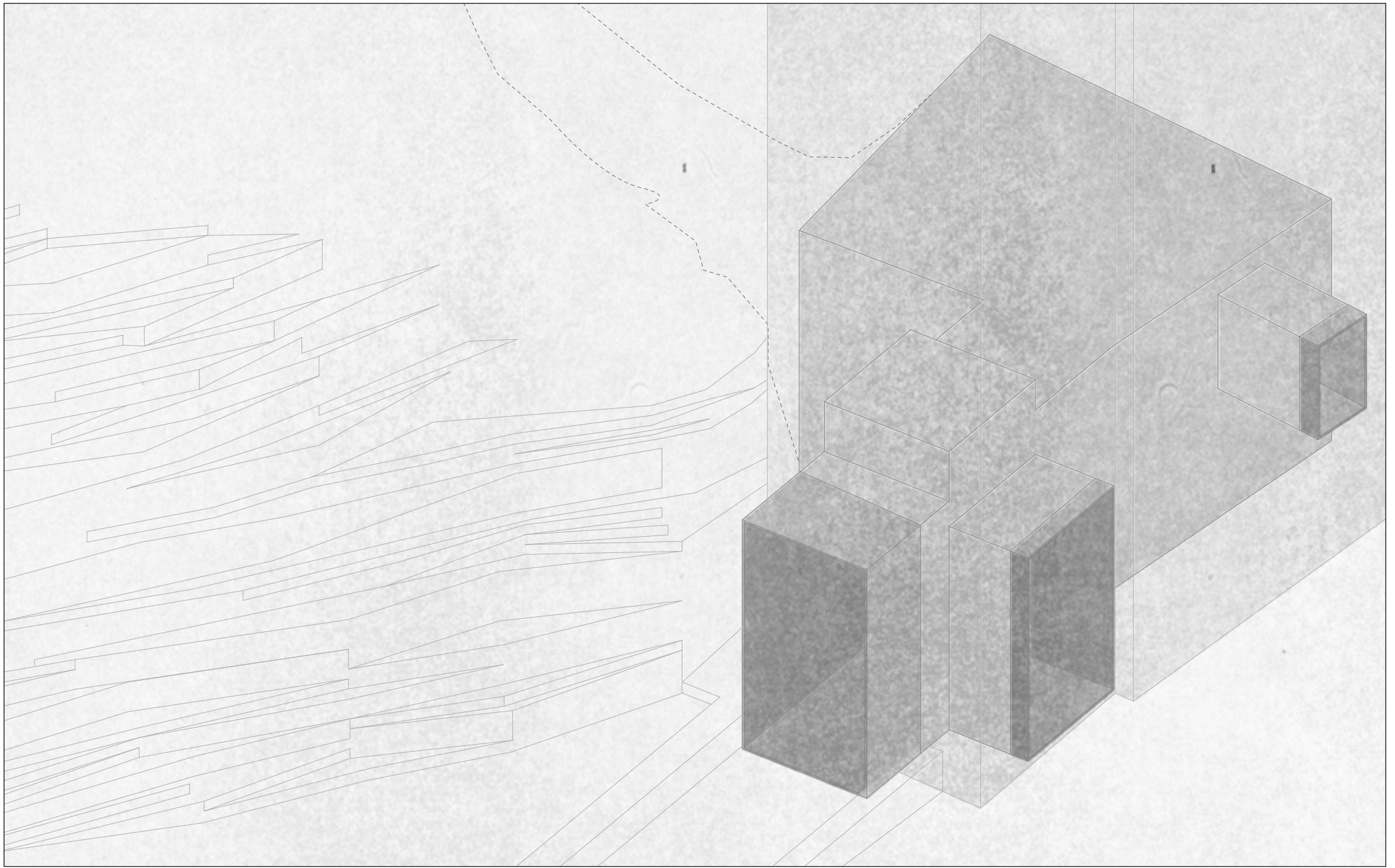
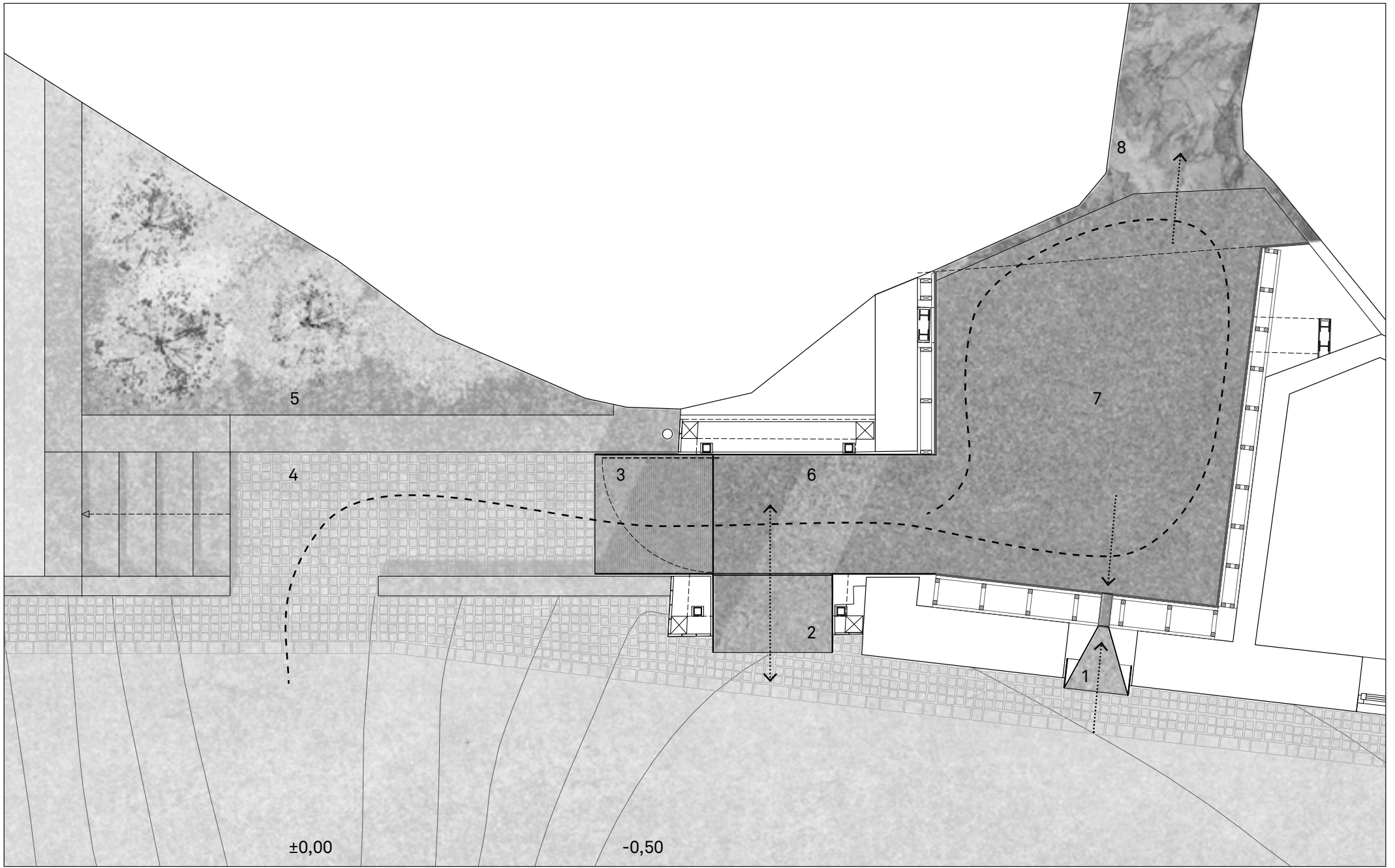


Ausstellungsraum für die Dauerausstellung:
Der Einstieg. Bergbau und Siedlungen am Ortler.

Architektin Eva Mair
Stilfs, 2017-2018





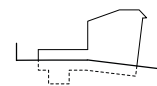
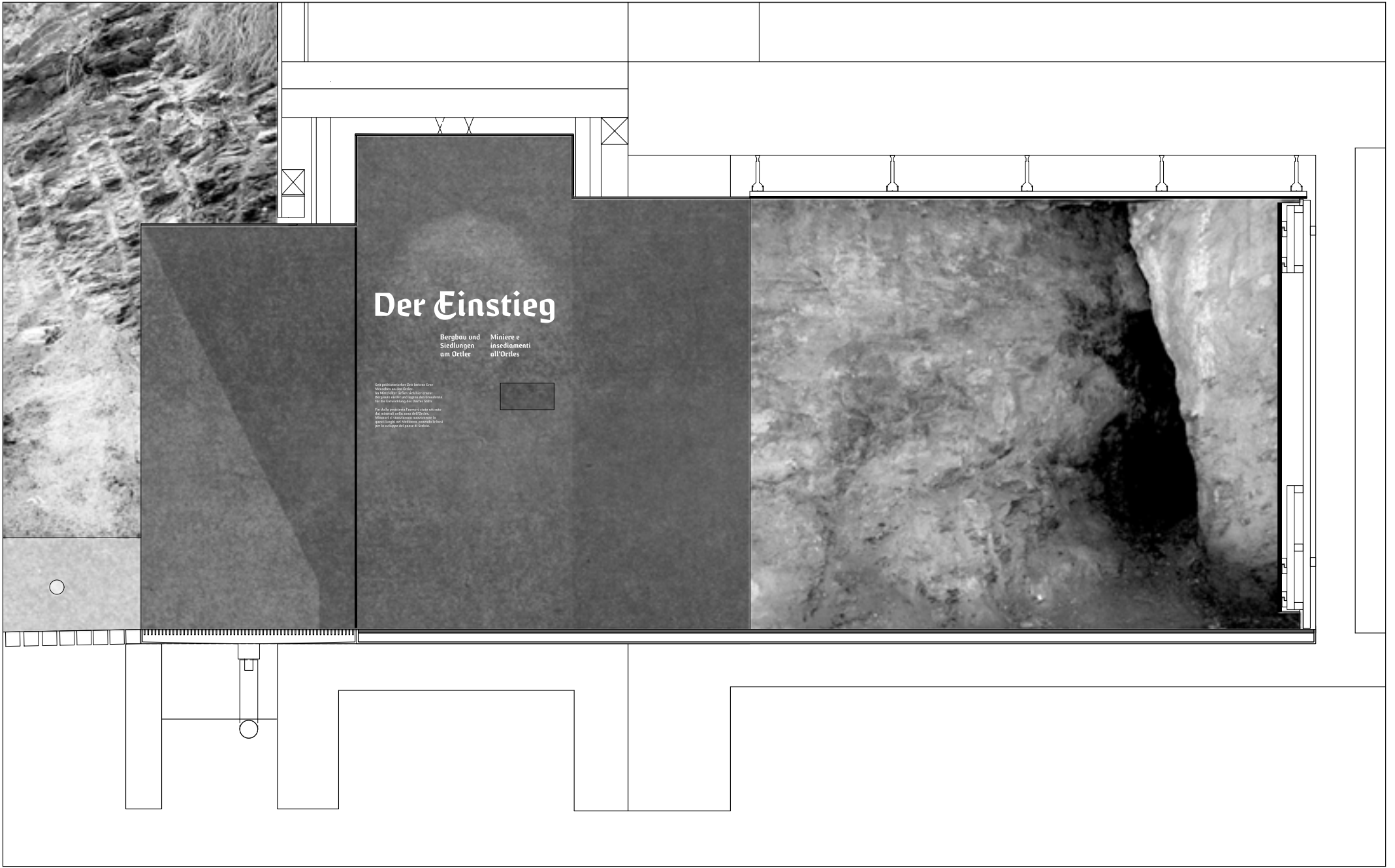
Eva Mair
3/14

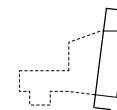
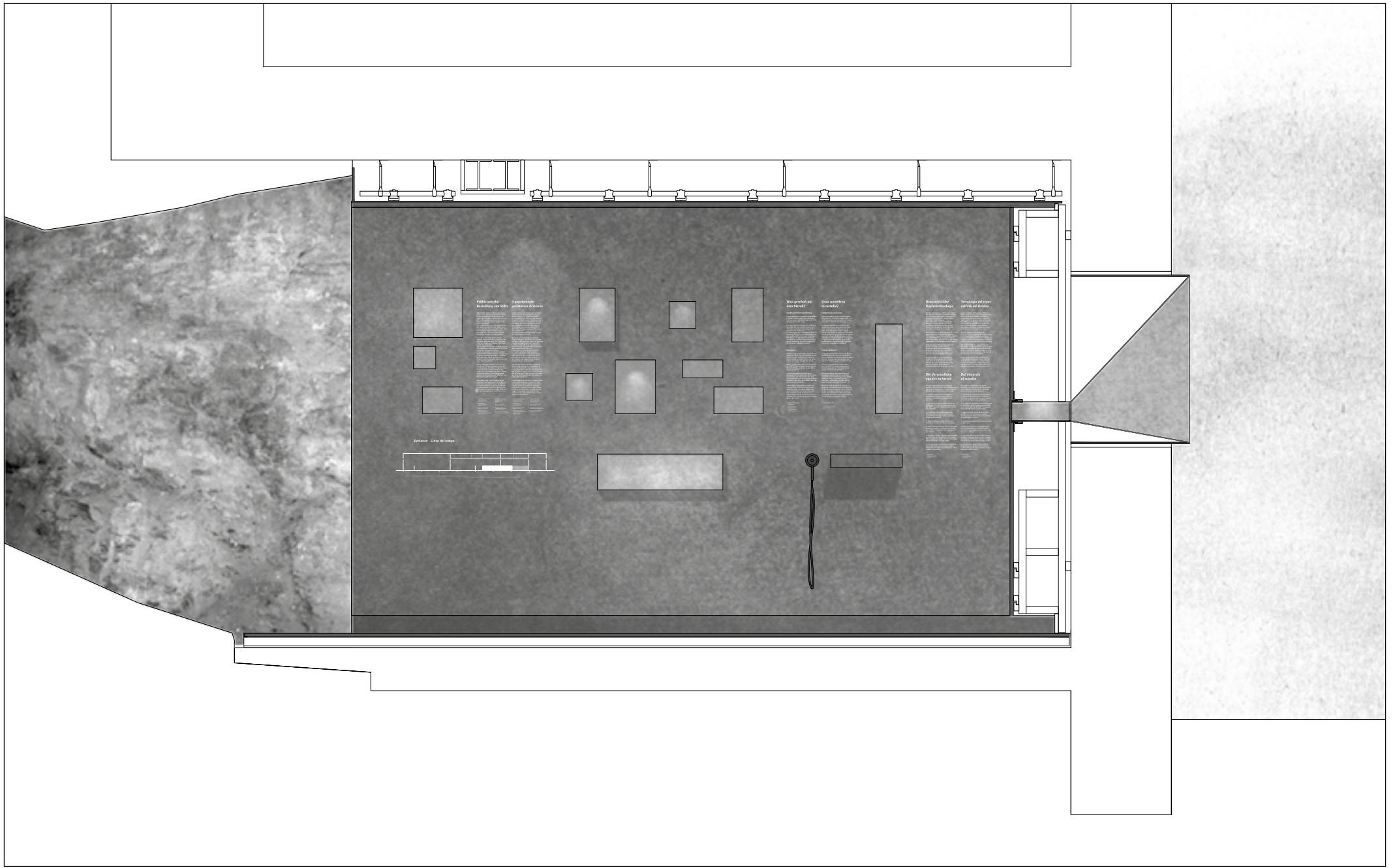
1 – Schaufenster klein
2 – Schaufenster und Sitznische
3 – Windfang

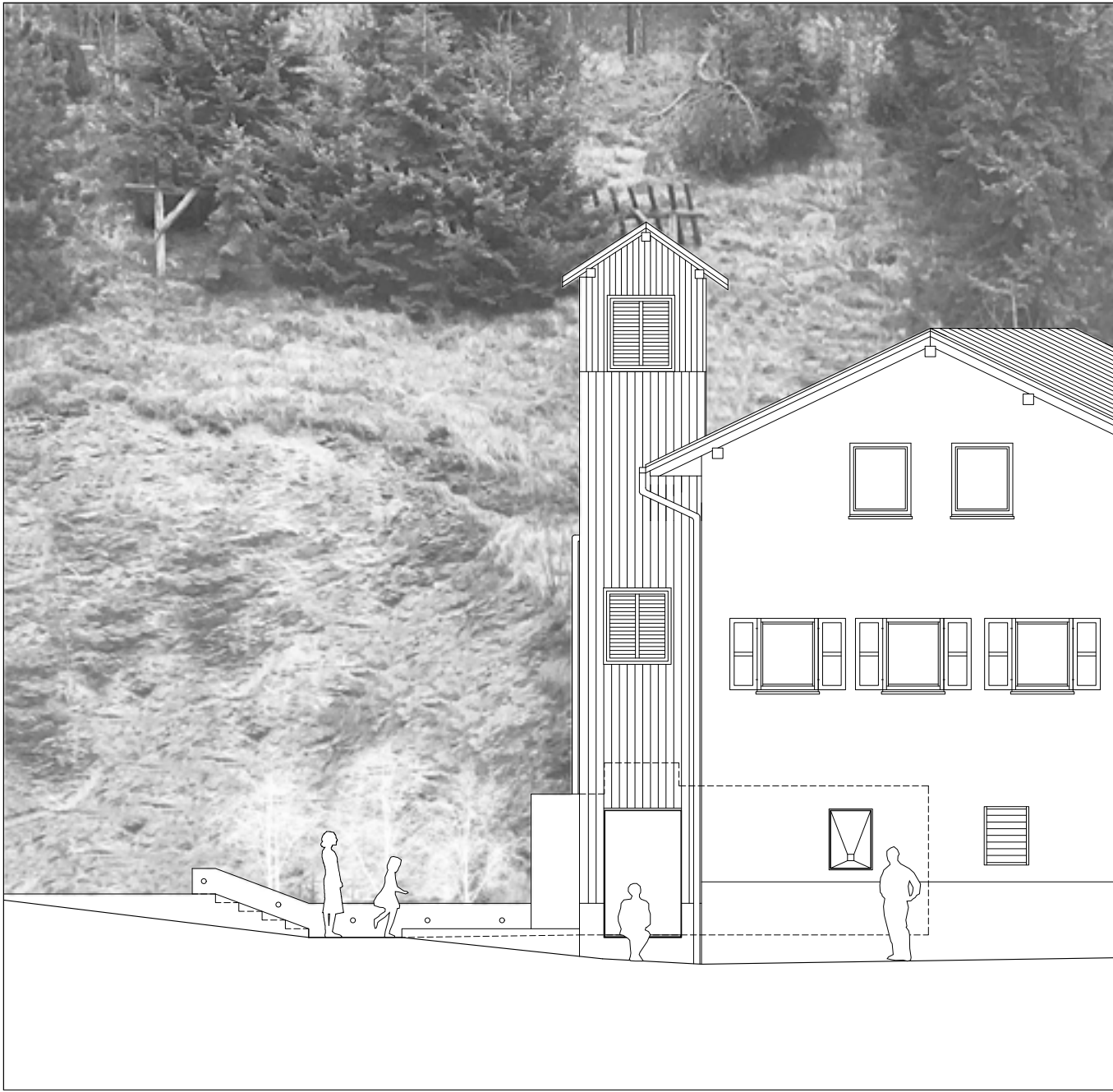
4 – Vorbereich und
barrierefreier Zugang
5 – Garten

6 – Eingangsbereich
7 – Ausstellungsraum
8 – natürlicher Stollen

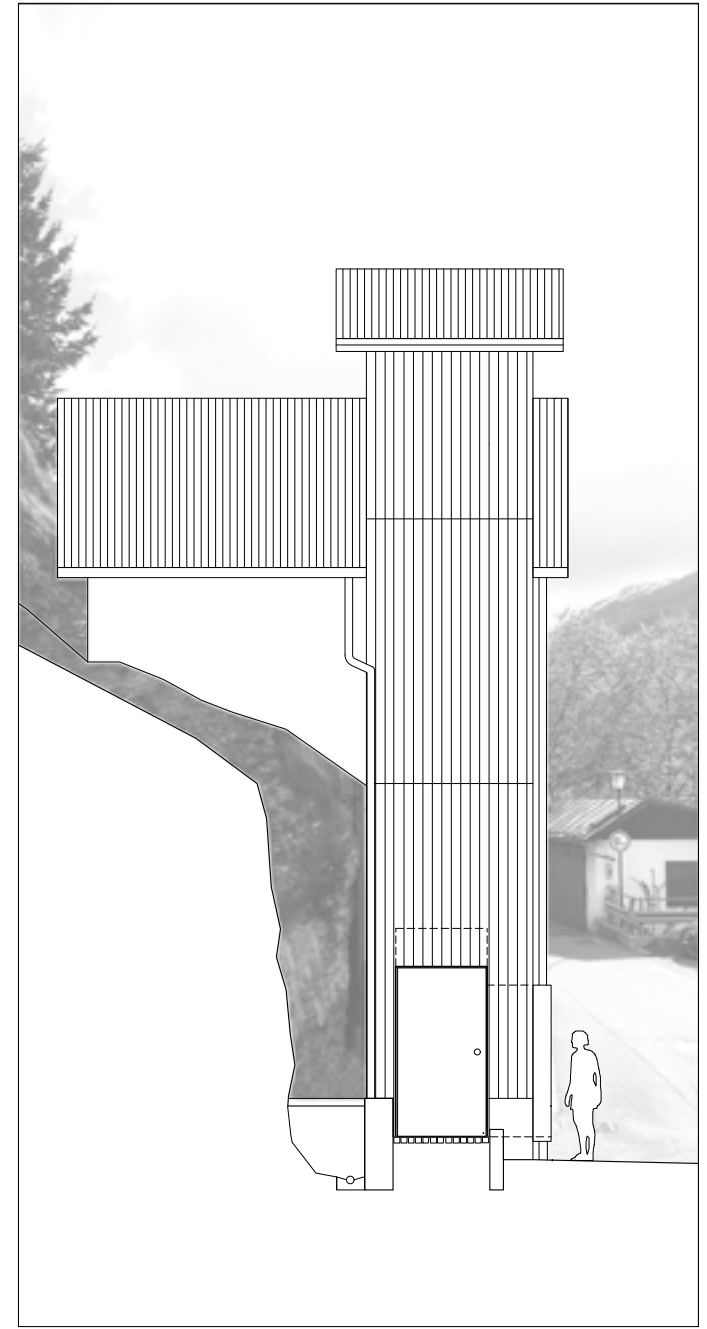
Grundriss
M 1:50
1 m







Eva Mair
6/14



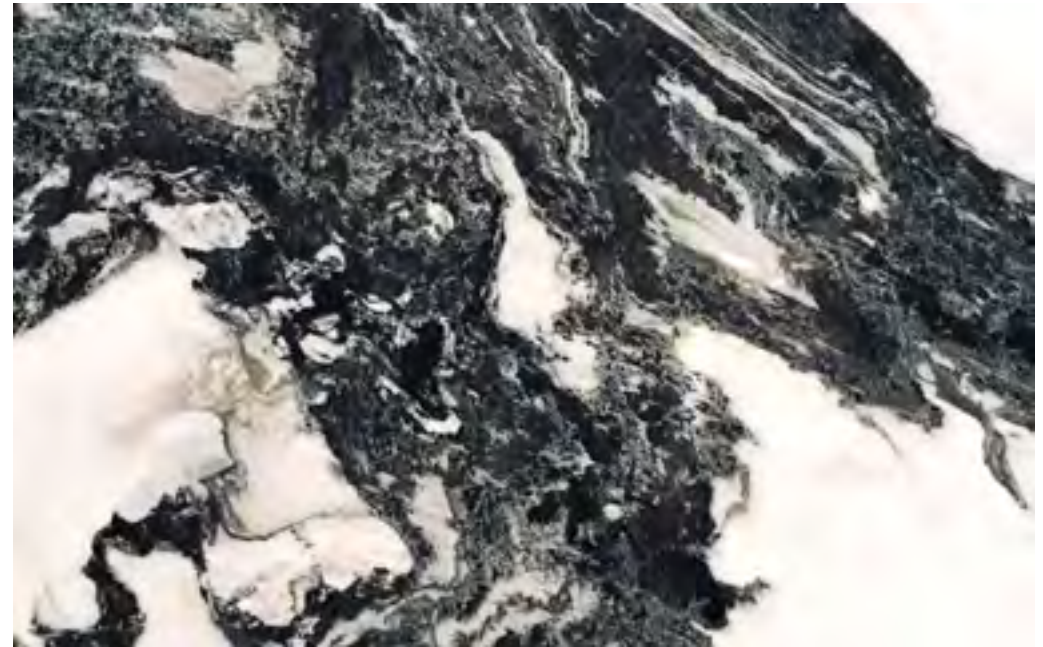
Ansichten Süd und West
M 1:100
2 m



1

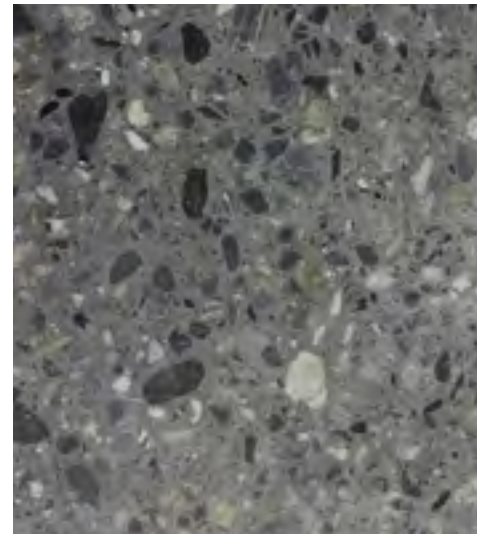
Eva Mair
7/14

1 – Stahl, galvanisch verzinkt
und geschwärzt



2

2 – Göflaner Marmor mit
schwarzen Quarzeinschlüssen



3

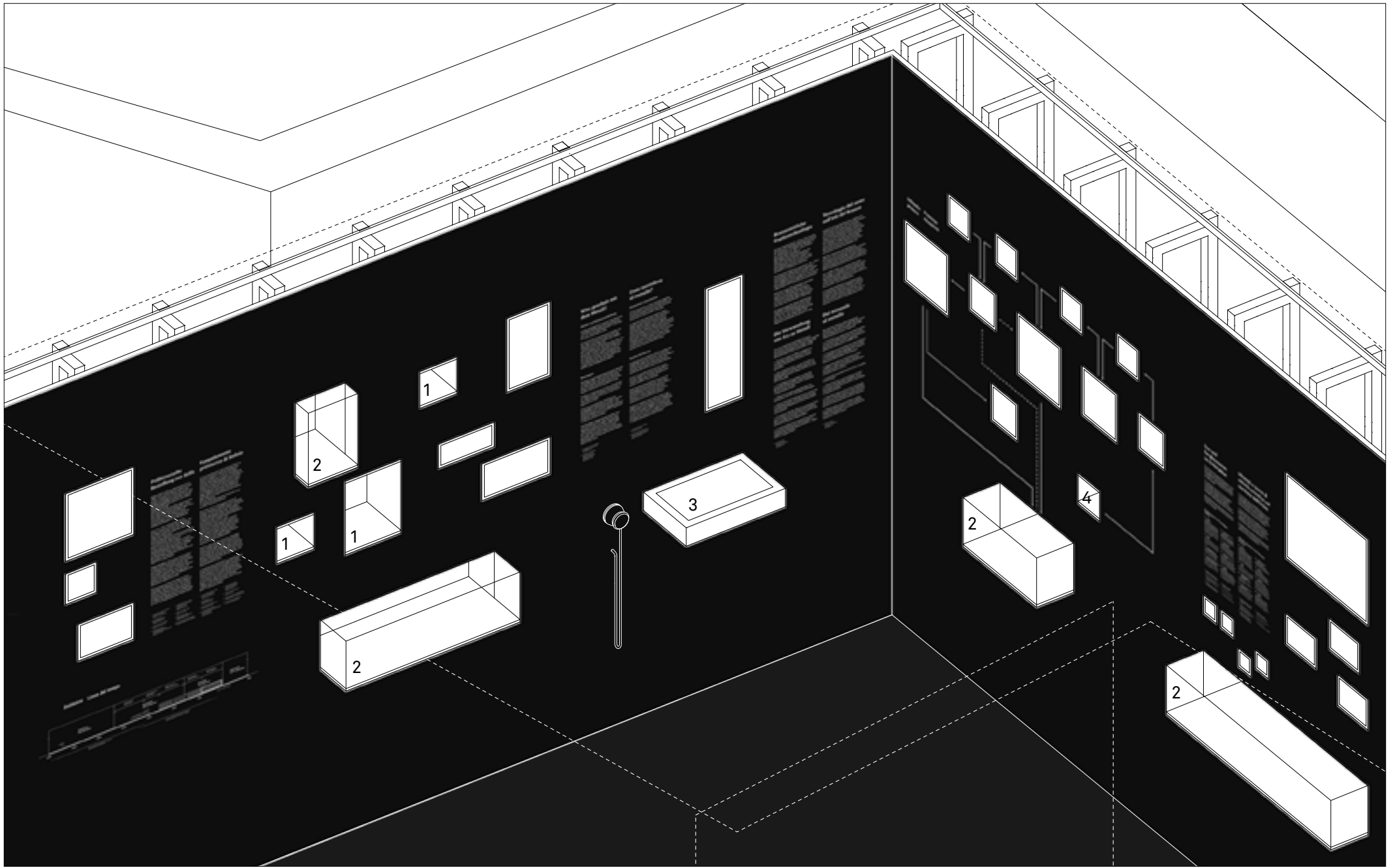
3 – Terrazzo, Zuschlag:
Ortlerkalkrundkies

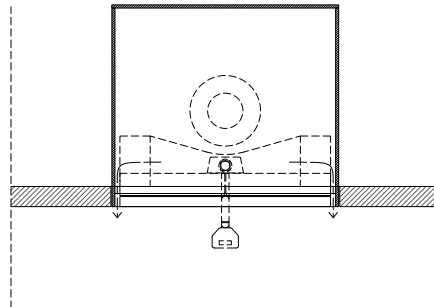
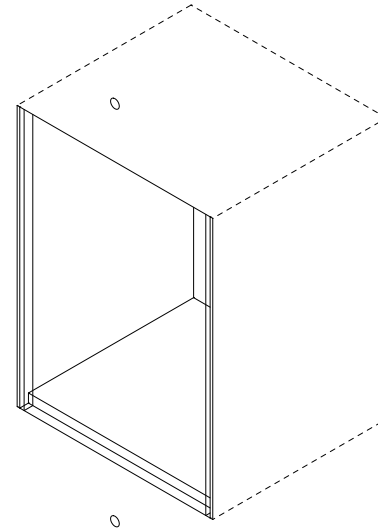
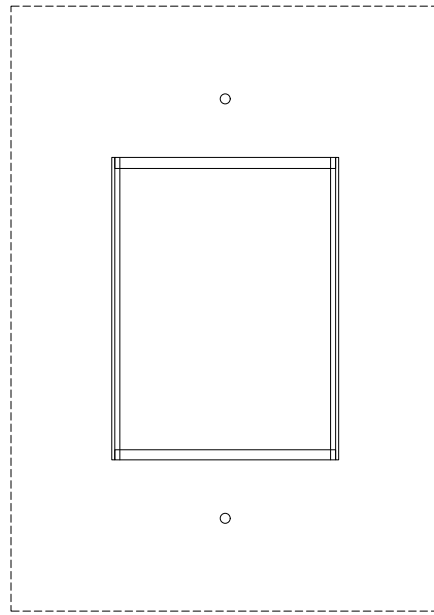
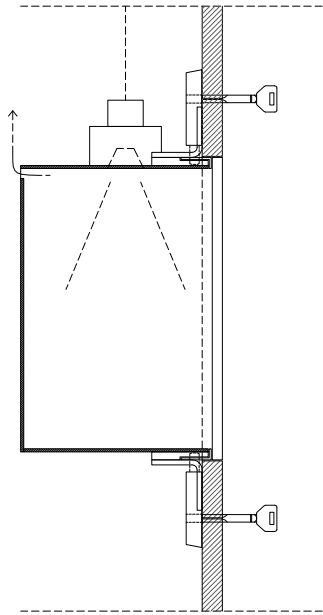


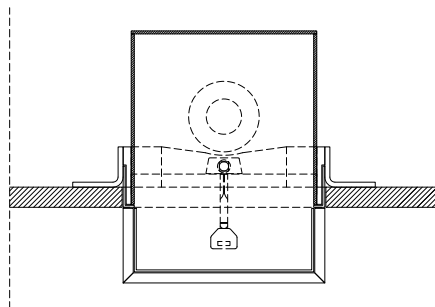
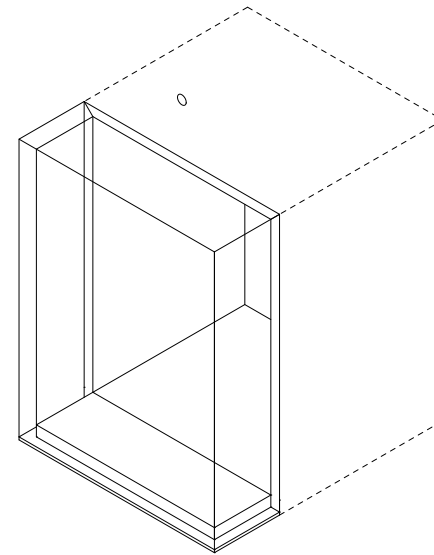
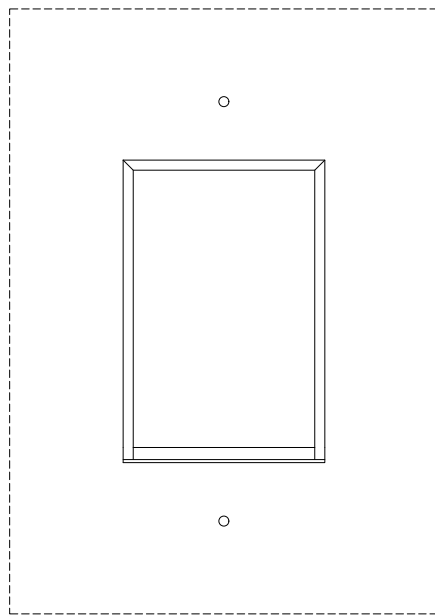
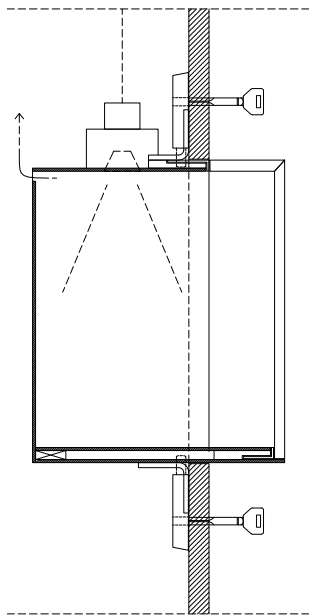
4

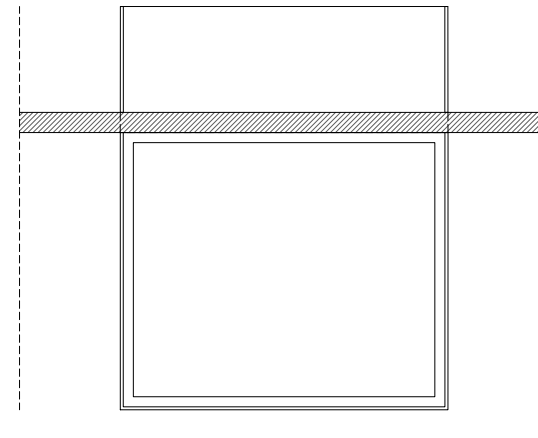
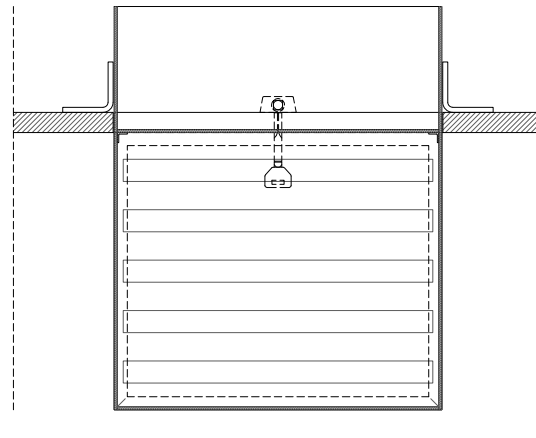
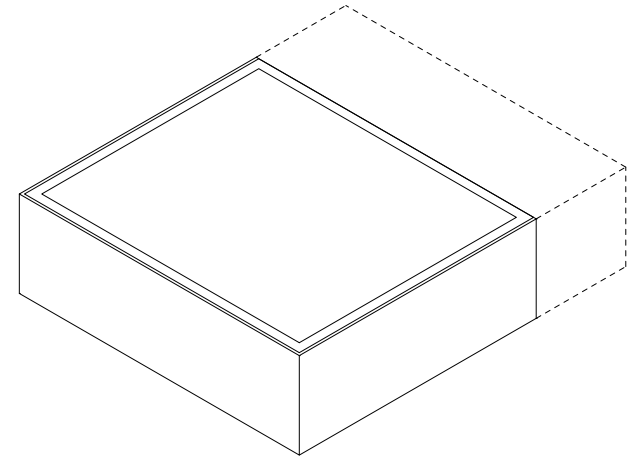
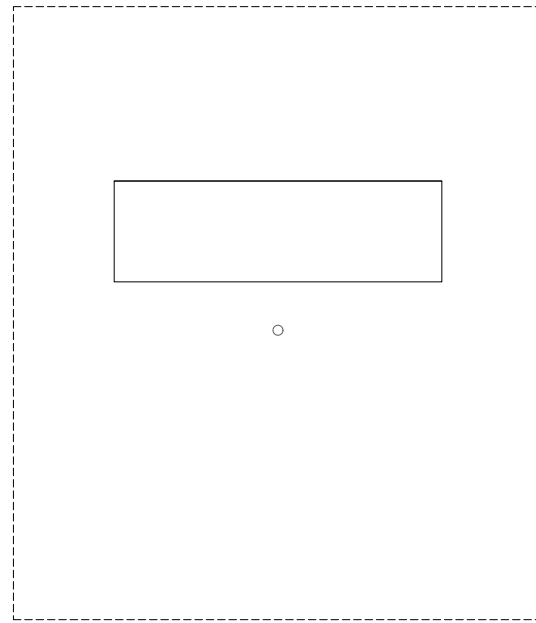
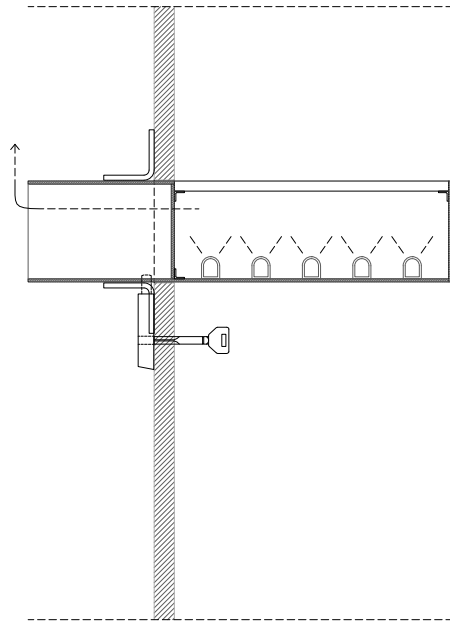
4 – Kupfer unbehandelt

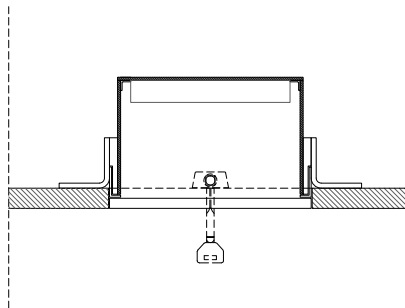
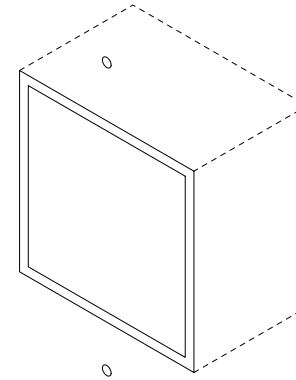
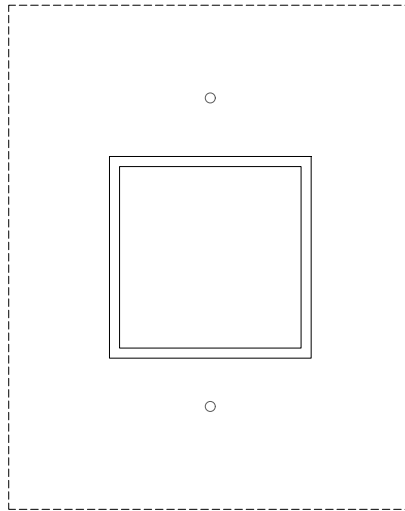
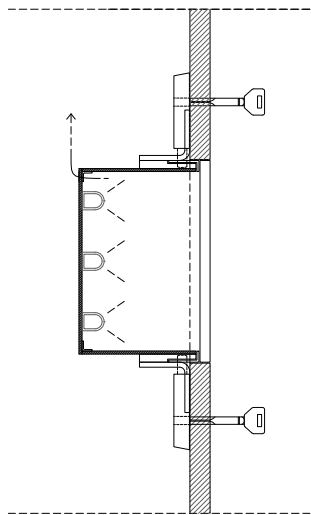
Materialien

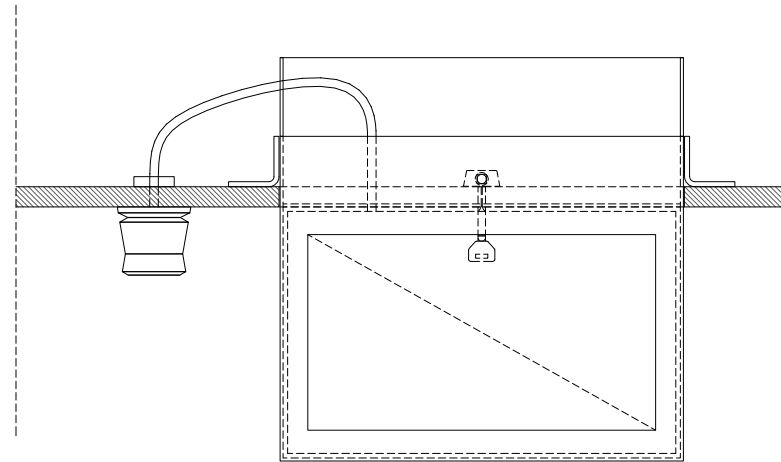
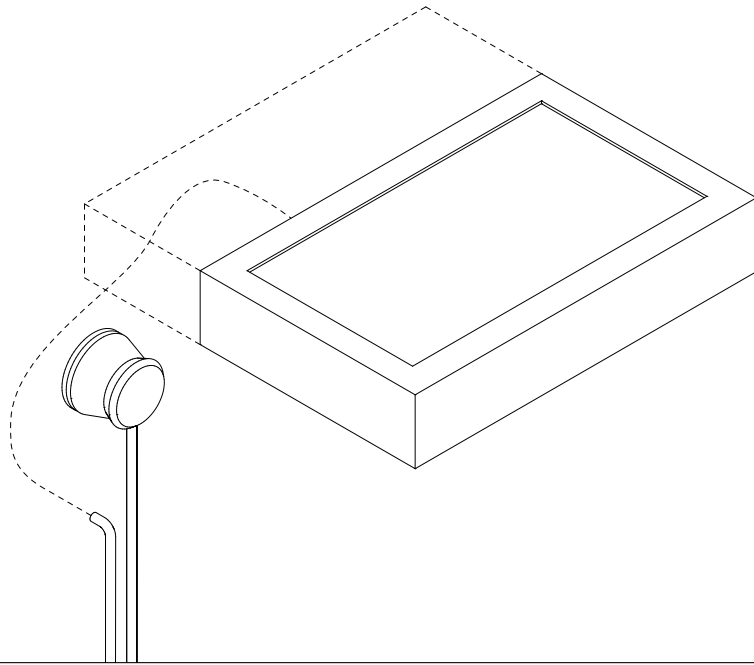
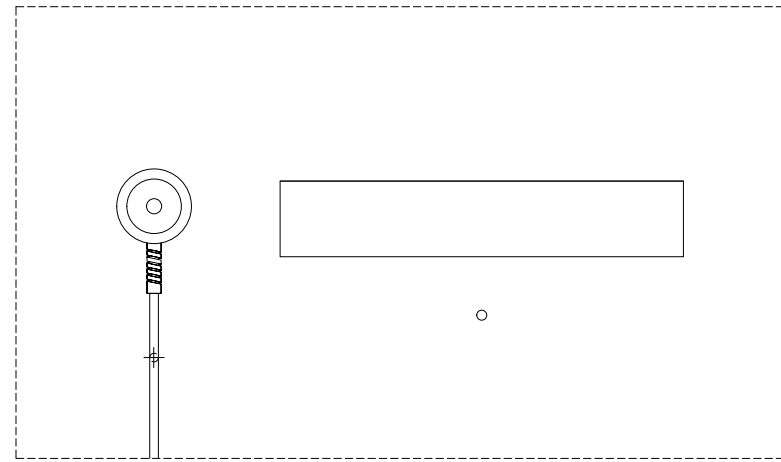
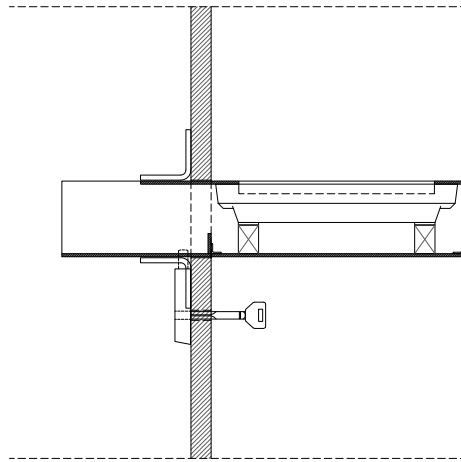
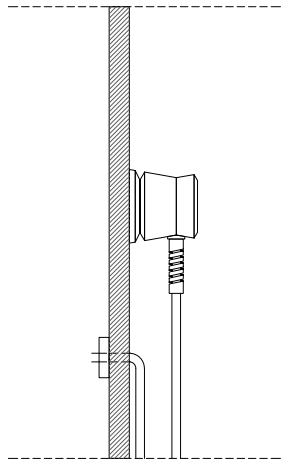












Alle Abbildungen in dieser Mappe
sind geistiges Eigentum der Verfasserin,
Eva Mair
© 2017-2018

Dauerausstellung „Der Einstieg.
Bergbau und Siedlungen am Ortler.“

Kurator:
Thomas Koch Waldner

Architektur:
Eva Mair

Ausstellungskonzept:
Nike Auer
Eva Mair
Claudia Polizzi

Visuelle Kommunikation:
Nike Auer
Claudia Polizzi
Mitarbeiter:
Alessio D'Ellena (type design)

Auftraggeber:
Gemeinde Stilfs – Comune di Stelvio

In Zusammenarbeit mit:
Amt für Bodendenkmäler Bozen –
Ufficio Beni archeologici Bolzano
Universität Innsbruck