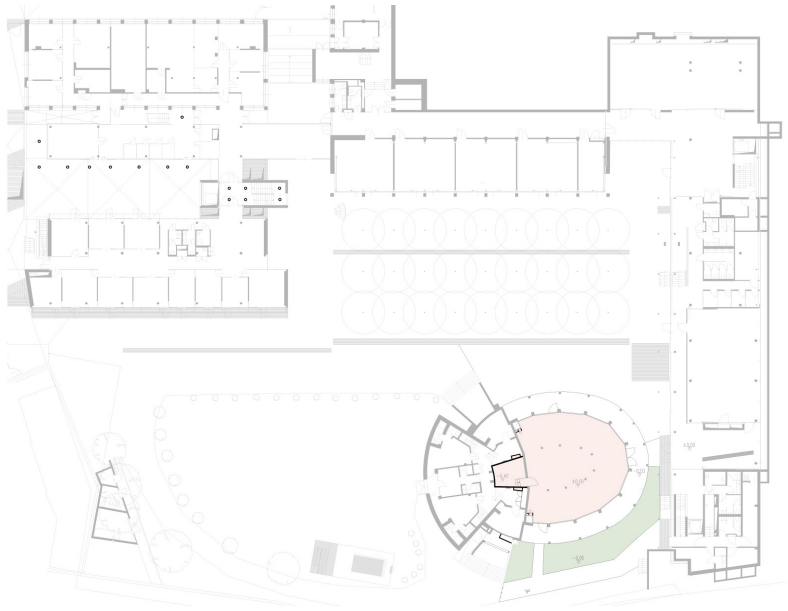
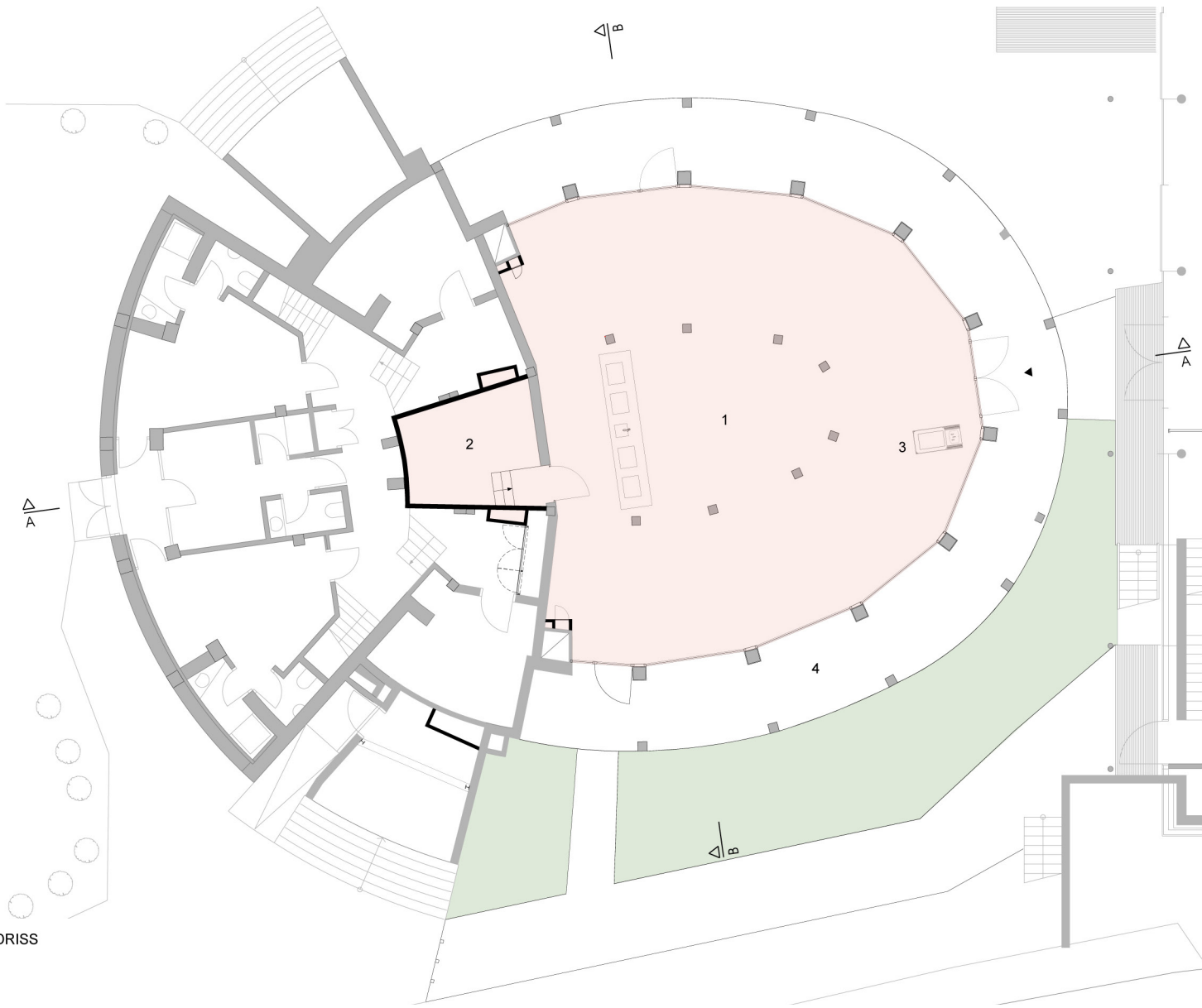


DER NEUE SPEISESAAL IM EX-GIL-GEBÄUDE_ROLAND BALDI ARCHITECTS
 LA NUOVA SALA DA PRANZO DELL' "EX-GIL" _ROLAND BALDI ARCHITECTS



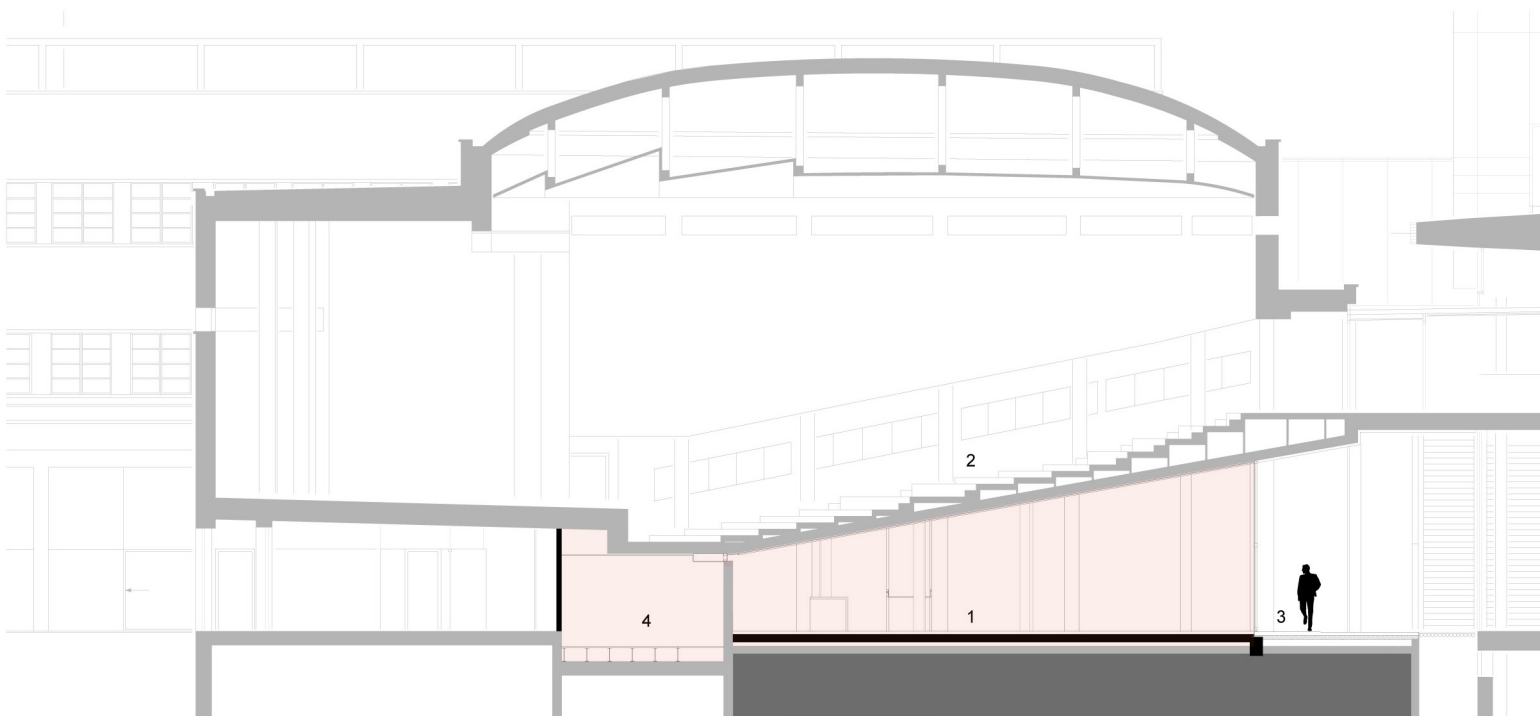
LAGEPLAN 0 2



GRUNDRISS

- 1 SPEISESAAL
- 2 DEPOT
- 3 ELEMENT FÜR ABLUFT
- 4 LAUBEN

0 2



SCHNITT AA

- 1 SPEISESAAL
- 2 BESTEHENDES AUDITORIUM
- 3 LAUBEN
- 4 DEPOT

0 2