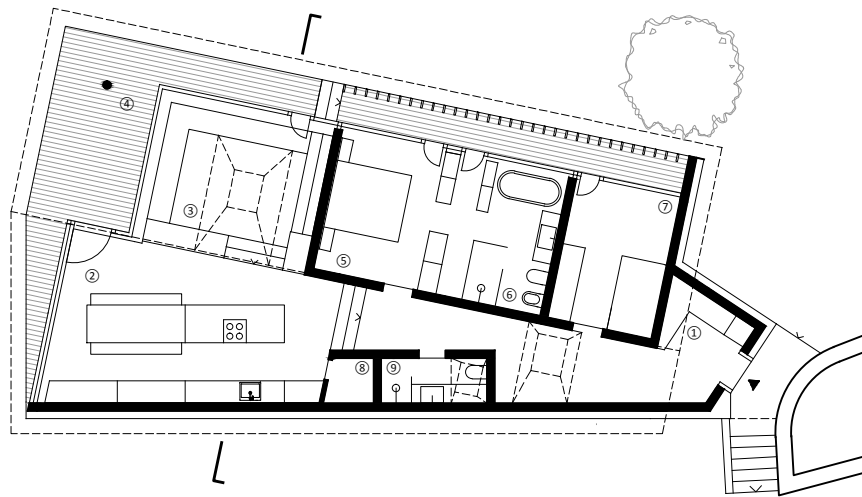
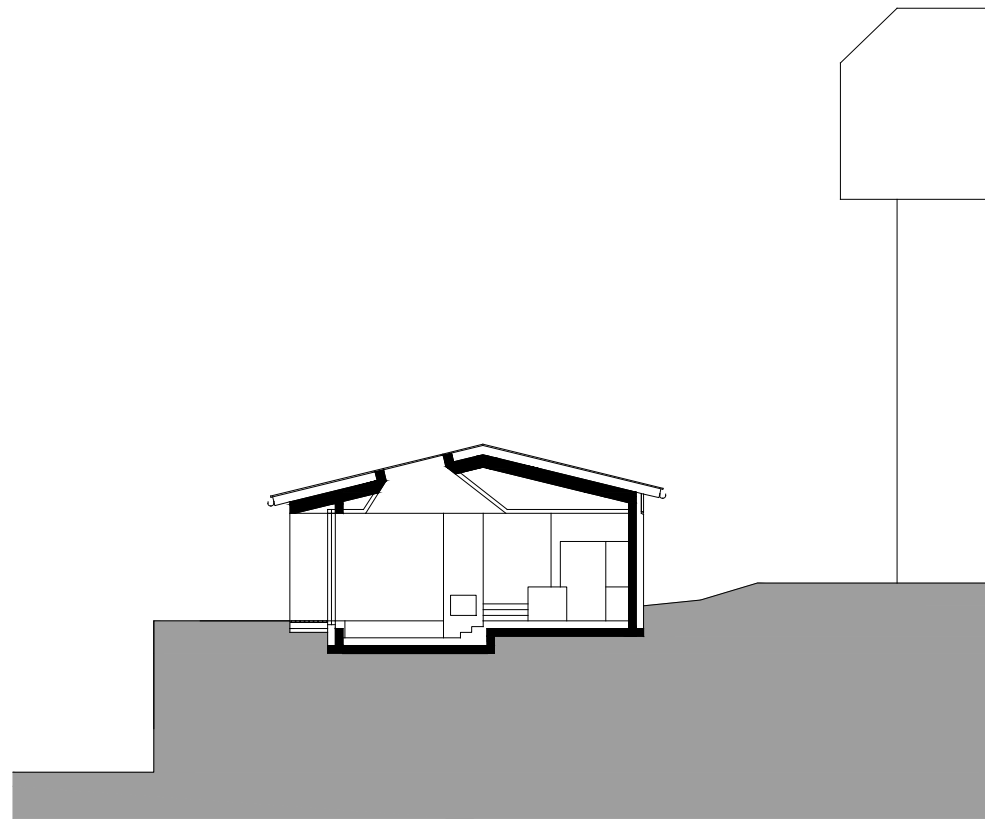


Lageplan
M 1:1000

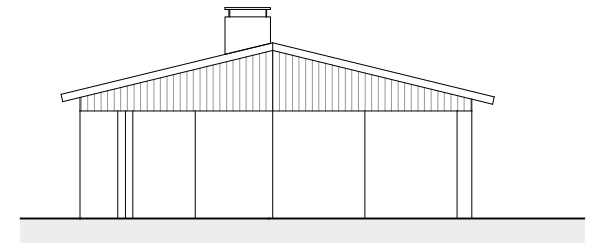
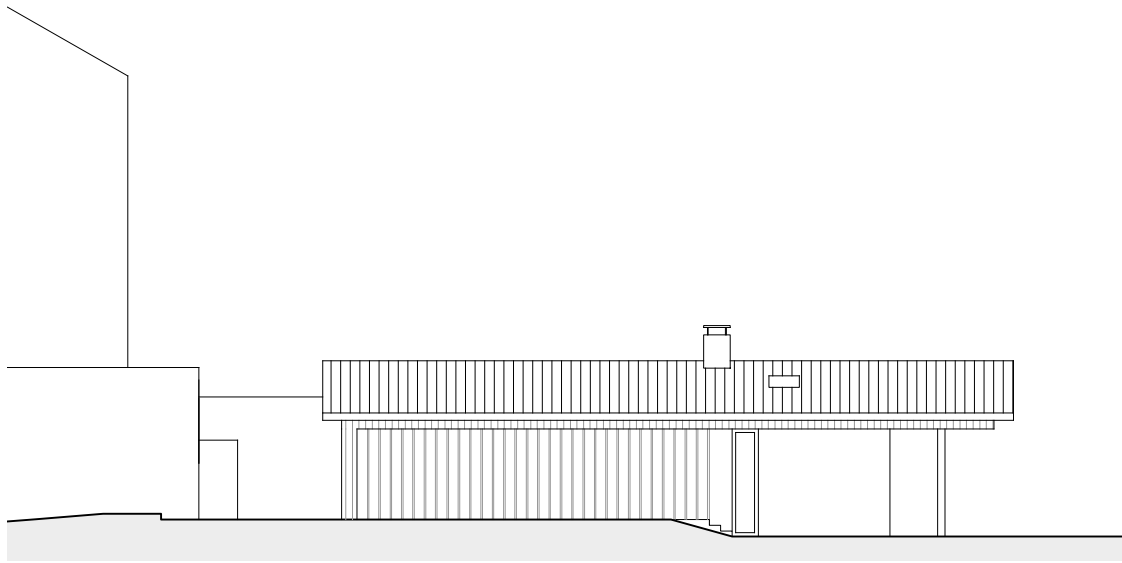


- ① Eingangsbereich
- ② Kochen/Essen
- ③ Wohnen
- ④ Terrasse
- ⑤ Schlafen
- ⑥ Bad
- ⑦ Schlafen
- ⑧ Weinkeller
- ⑨ WC/Dusche

Erdgeschoss
M 1:200



Schnitt
M 1:200



Ansicht
M 1:200